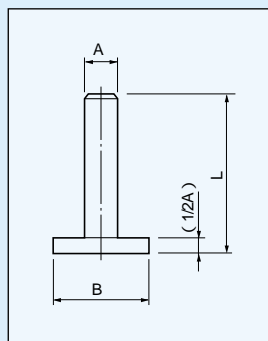


表面実装用ピン〔DH,DHSシリーズ〕1パック1000本入)

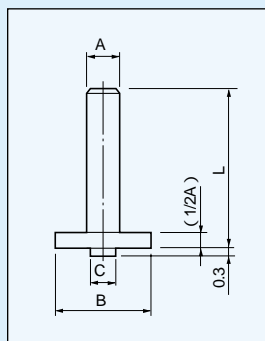
- 表面実装用基板に立てられるピンです。
- DHSシリーズは位置決めが出来ています。
- 材質.....DH-4~6.....リン青銅  
DHS-4~6.....リン青銅  
DH-8~DH-20.....銅  
DHS-8~DHS-20.....銅
- 処理.....ニッケル下地金メッキ
- 電流容量



- DH-4- )2A
- DHS-4- )2A
- DH-6- )4A
- DHS-6- )4A
- DH-8- )6A
- DHS-8- )6A
- DH-10- )10A
- DHS-10- )10A
- DH-12- )13A
- DHS-12- )13A
- DH-14- )20A
- DHS-14- )20A
- DH-20- )30A
- DHS-20- )30A

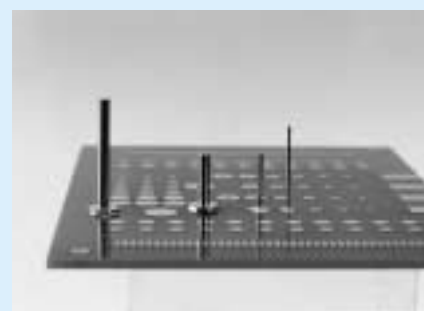


DHシリーズ



DHSシリーズ  
(位置決めピン付)

使用例



推奨ランド径

●DHシリーズ

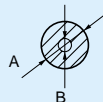
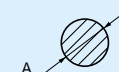
	A
DH- 4	2.0
DH- 6	2.5
DH- 8	3.0
DH-10	3.5
DH-12	4.0
DH-14	4.5
DH-20	6.0

●DHSシリーズ

	A	B
DHS- 4	2.0	0.5
DHS- 6	2.5	0.7
DHS- 8	3.0	0.7
DHS-10	3.5	0.7
DHS-12	4.0	0.7
DHS-14	4.5	0.9
DHS-20	6.0	0.9

品番	A	B	L
DH- 4- 5	0.45	1.2	5
DH- 4-10	"	"	10
DH- 4-15	"	"	15
DH- 4-20	"	"	20
DH- 6- 5	0.6	1.8	5
DH- 6-10	"	"	10
DH- 6-15	"	"	15
DH- 6-20	"	"	20
DH- 8- 5	0.8	2.3	5
DH- 8-10	"	"	10
DH- 8-15	"	"	15
DH- 8-20	"	"	20
DH-10- 5	1.0	3.0	5
DH-10-10	"	"	10
DH-10-15	"	"	15
DH-10-20	"	"	20
DH-12- 5	1.2	3.5	5
DH-12-10	"	"	10
DH-12-15	"	"	15
DH-12-20	"	"	20
DH-14- 5	1.4	4.0	5
DH-14-10	"	"	10
DH-14-15	"	"	15
DH-14-20	"	"	20
DH-20- 5	2.0	5.5	5
DH-20-10	"	"	10
DH-20-15	"	"	15
DH-20-20	"	"	20

品番	A	B	C	L
DHS- 4- 5	0.45	1.2	0.45	5
DHS- 4-10	"	"	"	10
DHS- 4-15	"	"	"	15
DHS- 4-20	"	"	"	20
DHS- 6- 5	0.6	1.8	0.6	5
DHS- 6-10	"	"	"	10
DHS- 6-15	"	"	"	15
DHS- 6-20	"	"	"	20
DHS- 8- 5	0.8	2.3	0.6	5
DHS- 8-10	"	"	"	10
DHS- 8-15	"	"	"	15
DHS- 8-20	"	"	"	20
DHS-10- 5	1.0	3.0	0.6	5
DHS-10-10	"	"	"	10
DHS-10-15	"	"	"	15
DHS-10-20	"	"	"	20
DHS-12- 5	1.2	3.5	0.6	5
DHS-12-10	"	"	"	10
DHS-12-15	"	"	"	15
DHS-12-20	"	"	"	20
DHS-14- 5	1.4	4.0	0.8	5
DHS-14-10	"	"	"	10
DHS-14-15	"	"	"	15
DHS-14-20	"	"	"	20
DHS-20- 5	2.0	5.5	0.8	5
DHS-20-10	"	"	"	10
DHS-20-15	"	"	"	15
DHS-20-20	"	"	"	20



クリーム半田はベタで塗って下さい。

表面実装用